

JULY 2020

ECONOMIC UPDATE

The Nevada Builders Alliance is Nevada's largest state-wide professional organization representing the construction industry and all affiliated sectors. Since our inception in 1966, our mission has been to create a positive business environment for our member companies and communities. We work every day to build a better, stronger Nevada.

Northern Nevada

1000 N. Division St.; Suite 102
Carson City, Nevada 89703
(775) 882-4353

Southern Nevada

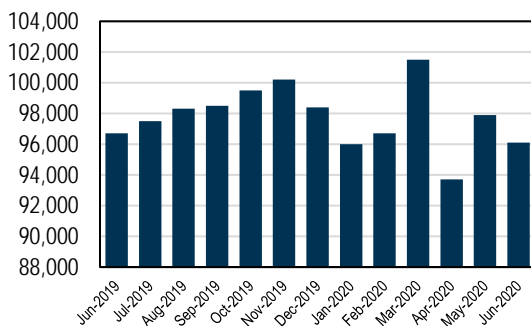
195 E. Reno Ave.; Suite B
Las Vegas, Nevada 89119
(702-744-8058)

Prepared by:

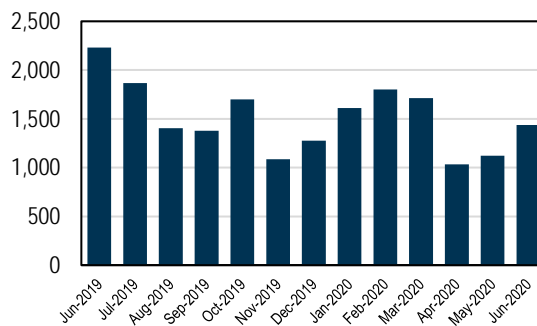


Economic conditions throughout the state of Nevada continue to be impacted by the COVID-19 health crisis and related response. Although the pandemic-related challenges persist, selected economic indicators have posted a bounce from the bottom experienced a month or two ago. Notably, overall employment has risen for two consecutive months, adding back 131,600 jobs lost (primarily in the leisure and hospitality and professional and business services sectors). This contributed to the statewide unemployment rate being reduced from an all-time high of 30.1 percent in April 2020 to 15.2 percent in June 2020. Statewide construction employment of 96,100 in June 2020 was essentially on par from a year ago as development activity moves forward. New home permitting activity, which dropped off significantly in April 2020, has started to climb back. Meanwhile, resale home prices have remained elevated throughout the crisis, primarily as a result of limited supply levels and sellers unwilling to offer deep discounts. The broader economic recovery cycle is expected to be predicated on the evolution of the health crisis. Cautious optimism persists, but the course of the virus and actions at the federal, regional and local level will have the potential alter anticipated recovery timelines. Should California or other major feeder markets explore mandatory quarantines or travel-related restrictions, the Silver State's progress to date would be dampened. In absence of a resurgence or intervention, an 18- to 36-month recovery timeline is anticipated.

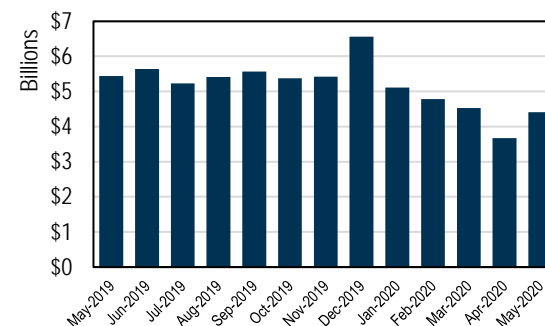
CONSTRUCTION EMPLOYMENT



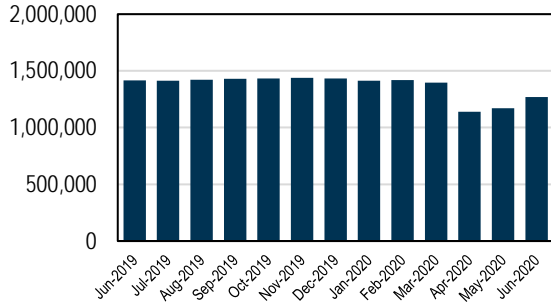
TOTAL RESIDENTIAL UNITS PERMITTED



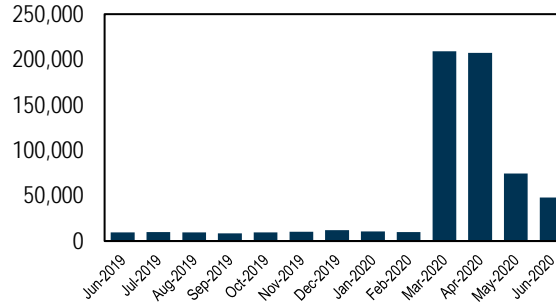
TAXABLE RETAIL SALES



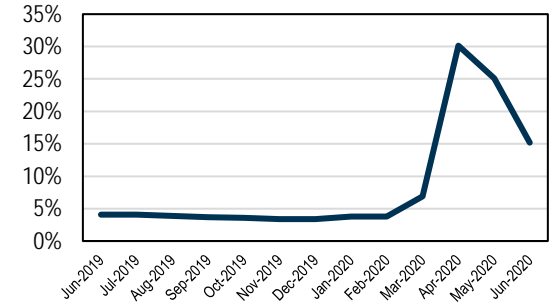
TOTAL EMPLOYMENT



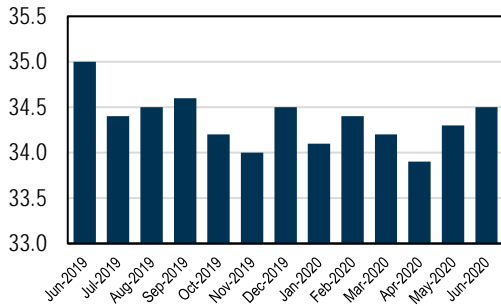
INITIAL UNEMPLOYMENT CLAIMS



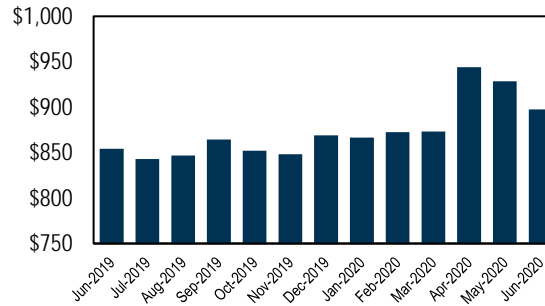
UNEMPLOYMENT RATE



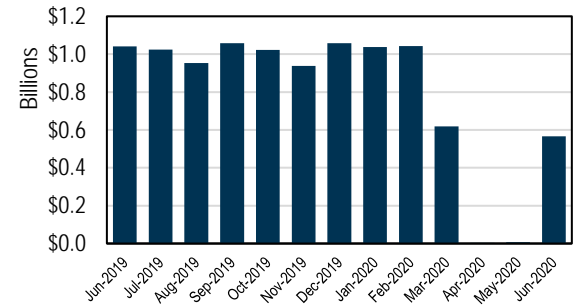
AVERAGE WEEKLY HOURS - PRIVATE



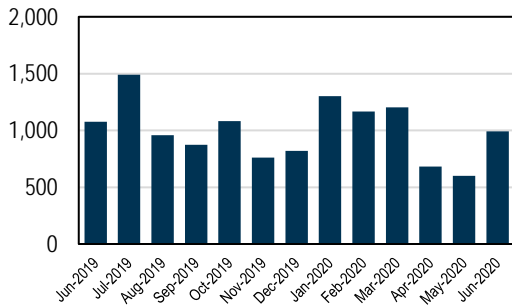
AVERAGE WEEKLY WAGES - PRIVATE



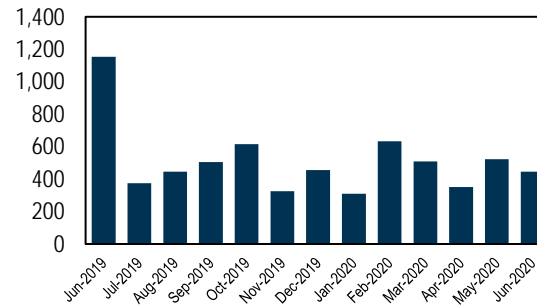
GROSS CASINO GAMING REVENUE



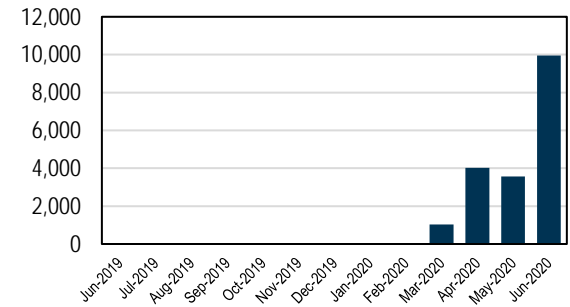
NEW SINGLE-FAMILY UNITS PERMITTED



NEW MULTI-FAMILY UNITS PERMITTED



NEW COVID-19 CASES



Applied Analysis (“AA”) was retained by Nevada Builders Alliance to summarize and analyze a series of key economic indicators on a recurring basis. Relevant data were obtained from AA’s internal databases as well as national, regional and local data providers, including without limitation, state and local governments. For more information visit <https://nevadabuilders.org/> or <http://appliedanalysis.com/>.

Sources: Bureau of Labor Statistics; Nevada Department of Employment, Training and Rehabilitation; Nevada Department of Taxation; Nevada Gaming Control Board; US Census Bureau; Nevada Department of Health and Human Services. While we have no reason to doubt the accuracy of the data reported by these providers, we have not performed audit or assurance procedures on these data, and as such, we cannot attest to their completeness.